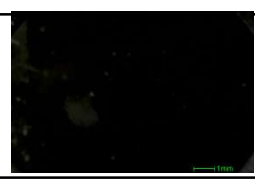


EDX Report

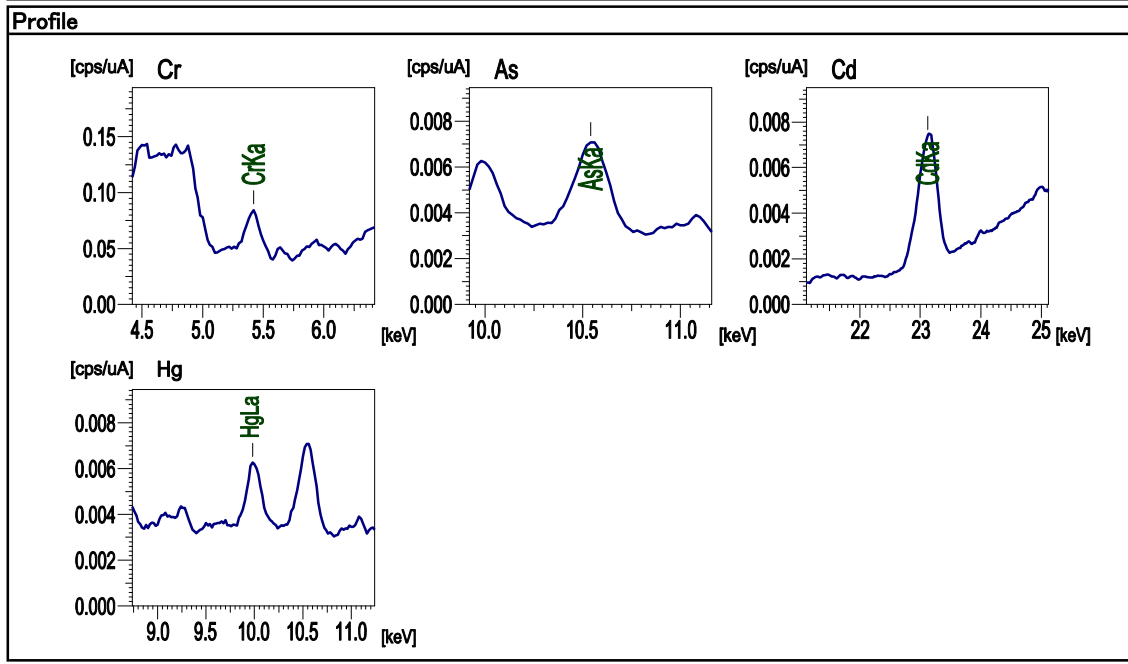


Sample Information	
Sample Name	Blank test
Meas.Date	2022/09/15 16:24:21
Comment	Atmosphere 300sec
Group	Heavy metals - Quan-FP
Operator	W.S



Measurement Condition				Collimator	10mm	Atmos.	
Channel	kV	uA	Filter	Acq.	Analysis	Time	DT%
Cr	50	28-Auto	#3	0 - 40	5.22- 5.62	Live- 100	31
As	50	193-Auto	#4	0 - 40	10.30-10.80	Live- 100	29
Cd	50	1000-Auto	#1	0 - 40	22.72-23.52	Live- 100	14
Hg	50	193-Auto	#4	0 - 40	9.74-10.24	Live- 100	29

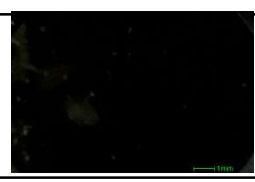
Quantitative Result		Std.Dev	Calc.Proc	Line	Intensity
Analyte	Result				
	Layer1	>=====	=====	=====	=====
Layer1	3500.000 um	[-----]	Fixed	-----	-----
H2O	99.990 %	[-----]	Balance	-----	-----
Cr	19.0 ppm	[ 4.1]	Quan-FP	CrKa	0.2585
As	1.9 ppm	[ 1.0]	Quan-FP	AsKa	0.0391
Cd	71.3 ppm	[ 1.7]	Quan-FP	CdKa	0.1024
Hg	3.1 ppm	[ 1.0]	Quan-FP	HgLa	0.0271



EDX Report



Sample Information	
Sample Name	SDG-3 After 24 hours
Meas.Date	2022/09/16 07:47:04
Comment	Atmosphere 300sec
Group	Heavy metals - Quan-FP
Operator	W.S



Measurement Condition				Collimator	10mm	Atmos.	
Channel	kV	uA	Filter	Acq.	Analysis	Time	DT%
Cr	50	28-Auto	#3	0 - 40	5.22- 5.62	Live- 100	31
As	50	193-Auto	#4	0 - 40	10.30-10.80	Live- 100	28
Cd	50	1000-Auto	#1	0 - 40	22.72-23.52	Live- 100	14
Hg	50	193-Auto	#4	0 - 40	9.74-10.24	Live- 100	28

Quantitative Result		Std.Dev	Calc.Proc	Line	Intensity
Analyte	Result				
	Layer1	>=====	=====	=====	=====
Layer1	3500.000 um	[-----]	Fixed	-----	-----
H2O	100.000 %	[-----]	Balance	-----	-----
Cr	1.4 ppm	[ 3.8]	Quan-FP	CrKa	0.0187
As	1.0 ppm	[ 1.0]	Quan-FP	AsKa	0.0104
Cd	1.0 ppm	[ 1.3]	Quan-FP	CdKa	0.0006
Hg	1.0 ppm	[ 1.0]	Quan-FP	HgLa	0.0019

